

 **Walt Disney's Comics and Stories – Vol. 14 No. 7**
(April 1952)

Evaluation Date: April 3, 2026

DELL
COMIC

APRIL
NO. 163

WALT DISNEY'S COMICS AND STORIES 10¢



COPYRIGHT WALT DISNEY PRODUCTIONS

A 52 PAGE COMIC MAGAZINE

SUMMARY OF OBSERVATIONS

This comic retains the front cover, back cover, centerfold, and all photographed interior pages. Overall visual presentation remains appealing, with the front cover showing strong color saturation and retained surface gloss, and the interior pages displaying clear artwork with consistent age-related toning. The spine remains continuous, though wear is concentrated at the staple regions.

Condition issues are more pronounced at the **front cover edges and binding areas**. The front cover shows **edge tears at both the upper-left and lower-left edges**, as well as a **corner crease at the top-right corner**. The spine exhibits fine vertical cracking with abrasion at staple locations. Both staples are present but show **heavy oxidation with surrounding paper deterioration**. The back cover exhibits **surface waviness**, visible as shallow undulation rather than sharp creasing. Interior pages show uniform toning consistent with age. The brittleness test image shows a single page gently flexed with no visible fiber fracture.

FRONT COVER — OBSERVATIONS

Walt Disney's Comics and Stories – Vol. 14 No. 7 (April 1952)

Photo Condition & Quality:

Image is sharp and evenly lit, with edges, corners, and spine visible. Resolution is sufficient to evaluate edge integrity, corner creasing, gloss, and spine wear.

Observations:

- Strong color saturation remains across the green background and character artwork.
- Surface gloss is visible across much of the cover field.
- At the **upper-left edge**, a **small edge tear** is visible, extending approximately **4–6 mm inward** from the edge, with separated paper fibers at the tear tip.
- At the **lower-left edge**, a second **edge tear** is present, slightly larger, measuring approximately **6–9 mm inward**, with irregular margins.
- At the **top-right corner**, a **corner crease** is visible, extending approximately **10–14 mm diagonally inward**, with visible color break along the fold line.
- Along the spine edge, **fine vertical cracks** are present, approximately **2–4 mm** in length.
- Areas of abrasion and material thinning are visible near the staple zones.
- Corner rounding is moderate, approximately **4–7 mm** inward.

Overall Impression:

The front cover remains visually strong but is affected by **two edge tears and a color-breaking corner crease**, along with spine-edge wear.

BACK COVER — OBSERVATIONS

Walt Disney's Comics and Stories – Vol. 14 No. 7 (April 1952)

Photo Condition & Quality:

Image is clear and evenly lit, fully framed with edges and corners visible.

SEND FOR THIS BIG

WHEATIES

OFFER NOW!

*Brand new!
Just out!*

★ SOLID STEEL!



★ Raised Numbers
—Just Like
Dad's License!

**ACTUAL
SIZE**

MINIATURE SOLID STEEL

1954 LICENSE PLATES

From all 48 States!

★ Finished in Colorful Baked Enamel!

★ Complete with Holes
for Easy Attachment!

MIDWEST STATES SET

1. North Dakota
2. South Dakota
3. Nebraska
4. Kansas
5. Minnesota
6. Iowa
7. Missouri
8. Wisconsin
9. Illinois
10. Michigan
11. Indiana
12. Ohio

EASTERN STATES SET

1. Maine
2. New Hampshire
3. Vermont
4. Massachusetts
5. Connecticut
6. Rhode Island
7. New York
8. Pennsylvania
9. New Jersey
10. Delaware
11. Maryland
12. West Virginia

SOUTHERN STATES SET

1. Virginia
2. Louisiana
3. Mississippi
4. Alabama
5. Georgia
6. Florida
7. South Carolina
8. North Carolina
9. Tennessee
10. Arkansas
11. Oklahoma
12. Kentucky

WESTERN STATES SET

1. Washington
2. Oregon
3. California
4. Montana
5. Idaho
6. Nevada
7. Arizona
8. Utah
9. New Mexico
10. Colorado
11. Wyoming
12. Texas

*Buy 'em by the set!
(12 DIFFERENT PLATES)
Only 25¢ and one
Wheaties boxtop
per set!*

HURRY! WHILE SUPPLIES LAST!

Mail To GENERAL MILLS, Box 1750, Minneapolis, Minnesota

Check set or sets desired. Enclose 25c (no stamps please) and Wheaties boxtop for each set checked, except Bonus Set for which enclose \$1.00 and FOUR (4) Wheaties boxtops.

MIDWEST EASTERN SOUTHERN WESTERN BONUS SET

NAME (print) _____

ADDRESS (print) _____

CITY (print) _____ STATE _____

SPECIAL BONUS OFFER

District of Columbia plate included if you order all 4 sets at once!
Only \$1.00 and 4 Wheaties Boxtops!



WHEATIES
Breakfast of Champions

Observations:

- Back cover shows **uniform tan toning** across the surface.
- The paper surface exhibits **visible waviness**, seen as shallow undulations running across the page rather than sharp folds.
- No distinct linear creases or breaks are visible; the waviness appears consistent with handling or environmental exposure rather than folding.
- No isolated stains, tide lines, or boundary-defined discoloration observed.
- Edge wear along the bottom and spine edges affects approximately **5–10 mm intermittently**.
- Corners show rounding of approximately **4–6 mm** inward.
- No writing observed.

Overall Impression:

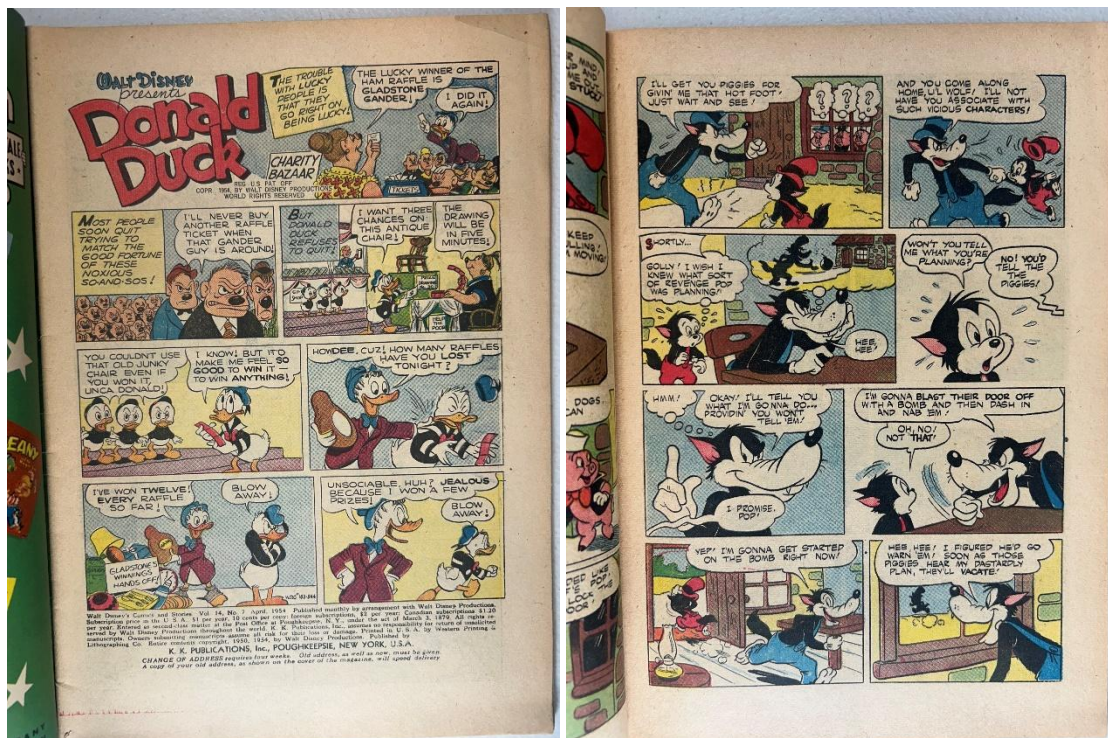
The back cover remains intact with **moderate handling wear and surface waviness**, without staining.

INTERIOR PAGES — OBSERVATIONS

Walt Disney's Comics and Stories – Vol. 14 No. 7 (April 1952)

Photo Condition & Quality:

Images are sharp and evenly lit, showing full interior pages with margins visible.





Observations:

- Interior pages exhibit **tan to light-tan paper coloration**.
- Toning is consistent across pages, with slightly deeper coloration toward outer margins.
- The transitions are gradual, consistent with **normal age-related oxidation**.
- Artwork remains clear with strong color and intact panel borders.
- No interior tears, chips, or paper loss observed.
- Minor corner bends visible on some pages, approximately **2–4 mm** inward.
- No interior writing observed.

Overall Impression:

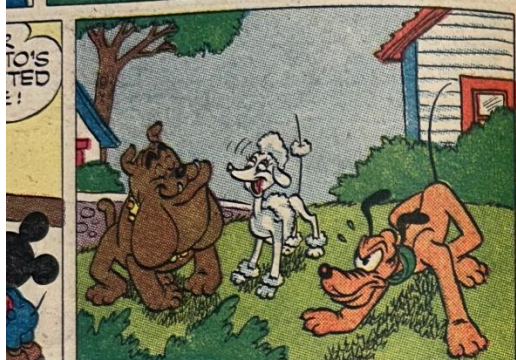
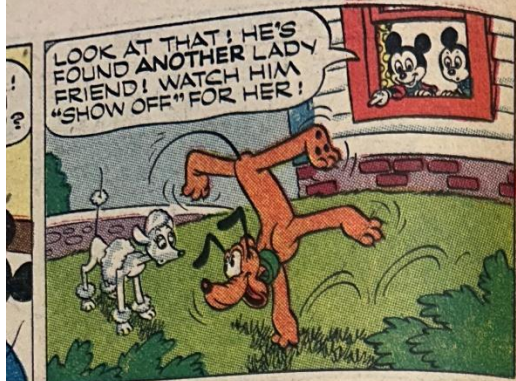
Interior pages are **complete, readable, and evenly toned**, with minor handling wear only.

CENTERFOLD — OBSERVATIONS

Walt Disney's Comics and Stories – Vol. 14 No. 7 (April 1952)

Photo Condition & Quality:

Image is in focus and evenly lit, clearly showing both pages and the central gutter.



WALT DISNEY'S
LITTLE HIAW



Observations:

- Both staple positions visible.
- Surrounding paper shows **stress and minor tearing at staple locations**, without full detachment.
- Fold line shows compression and localized wear.
- Centerfold remains attached.

Overall Impression:

The centerfold is **attached but stressed at the binding points**.

SPINE — OBSERVATIONS

Walt Disney's Comics and Stories – Vol. 14 No. 7 (April 1952)

Photo Condition & Quality:

Image is sharp and well lit, showing the full spine length clearly.

**Observations:**

- Spine remains continuous.
- Fine vertical cracking visible along the spine, approximately **2–4 mm** per crack.
- Abrasion and material wear are concentrated at staple locations.
- No long spine splits observed.

Overall Impression:

The spine is **structurally intact but worn**, with cracking and abrasion near the binding.

UPPER STAPLE — OBSERVATIONS

Walt Disney's Comics and Stories – Vol. 14 No. 7 (April 1952)

Photo Condition & Quality:

Macro image is sharp and evenly lit.



Observations:

- Metal staple present and embedded.
- **Heavy surface oxidation** visible, with rust accumulation.
- Surrounding paper shows breakdown and fiber loss extending approximately **3–5 mm**.

Overall Impression:

Upper staple shows **heavy oxidation with surrounding paper deterioration**.

LOWER STAPLE — OBSERVATIONS

Walt Disney's Comics and Stories – Vol. 14 No. 7 (April 1952)

Photo Condition & Quality:

Macro image is clear and properly framed.



Observations:

- Metal staple present with oxidation comparable to the upper staple.
- Surrounding paper shows similar breakdown and fraying, approximately **3–5 mm** outward.

Overall Impression:

Lower staple shows **heavy oxidation with surrounding paper deterioration.**

BRITTLENESS TEST — OBSERVATIONS

Walt Disney's Comics and Stories – Vol. 14 No. 7 (April 1952)

Photo Condition & Quality:

Image shows a single interior page lifted above flat underlying pages.



Observations (confined to the lifted page):

- Page bends in a **smooth, shallow arc**.
- No visible fiber fracture, splitting, or flaking along the bend line.
- Paper surface remains continuous at the point of flex.

Overall Impression:

The tested page demonstrates **retained flexibility** and does **not exhibit brittle behavior**.